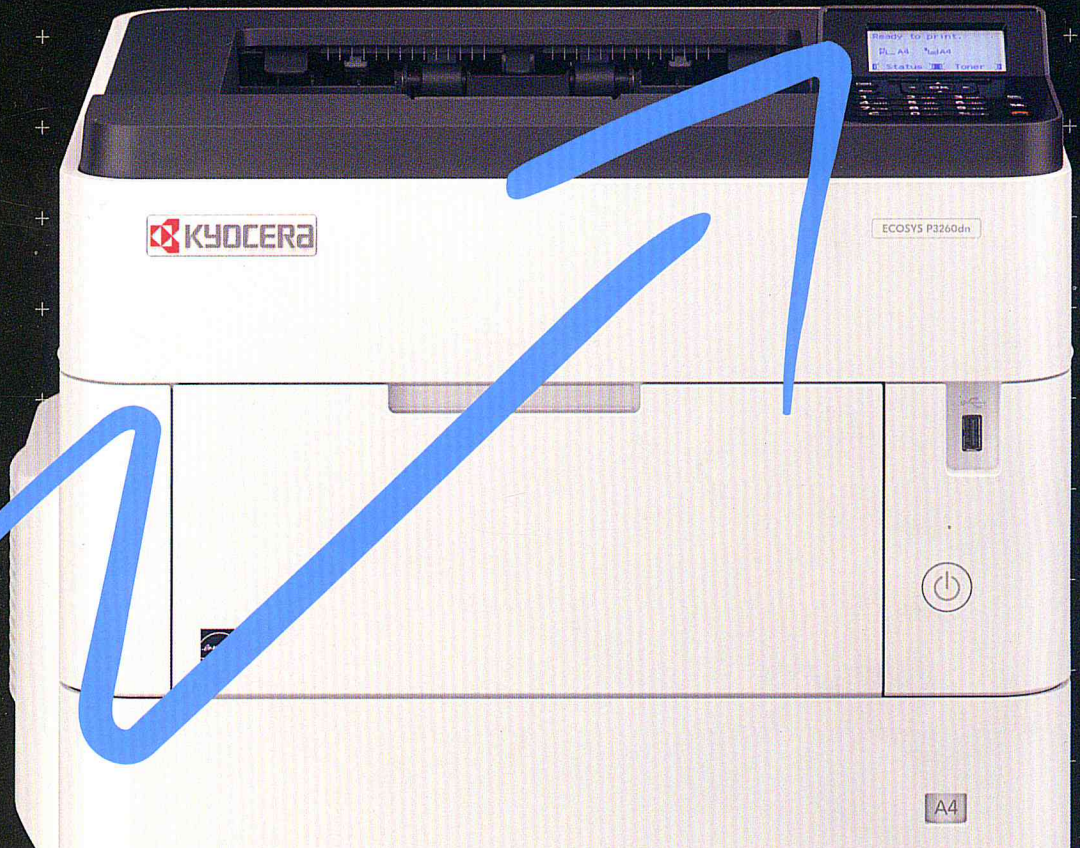
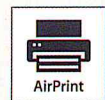


ECOSYS P3260dn
ECOSYS P3155dn Series

Monochrome Printer
for A4 Format



Perfectively Fit for High Volume Printing.



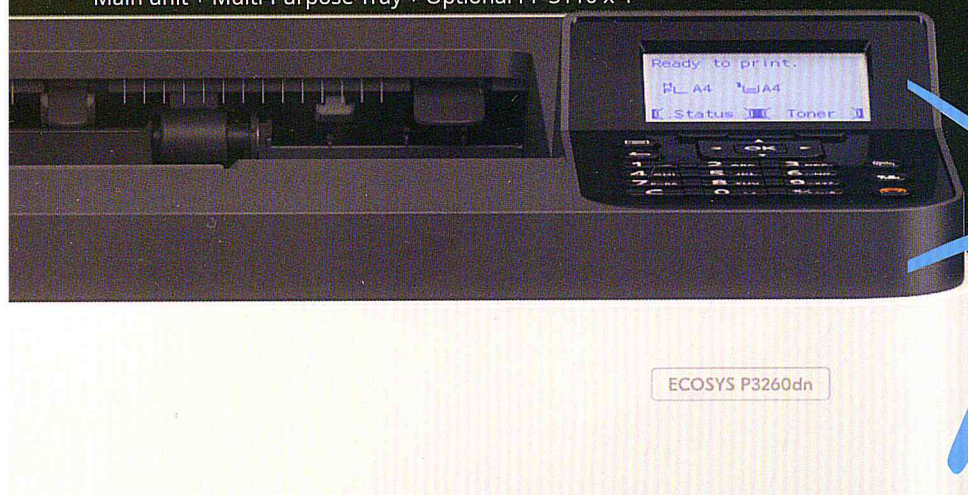
www.kyoceradocumentsolutions.co.th

ECOSYS P3260dn ECOSYS P3155dn ECOSYS P3150dn ECOSYS P3145dn

- Speedy A4 print to 60 pages ppm*.
- Support high print volume with paper capacity up to 2,600 sheets**.
- Remarkable print quality with Fine 1200 resolution.
- Visually clear with 5 line LCD display and numeric key.

*ECOSYS P3260dn

**Main unit + Multi-Purpose Tray + Optional PF-3110 x 4



ECOSYS P3260dn

Evolution of ECOSYS

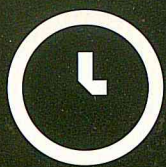
ECOLOGY - Providing energy-saving, silent design and compact design, realize top-class environment support in the industry.

ECONOMY - Providing lower CPP and longer life-time design, enhance TCO competitiveness.

SYSTEM - Provide reliable machines by assuring compatibility with the legacy machines / improvement of stable operation / adding the function of streamlining duties

KYOCERA Document Solutions strives to be a company that contributes to the society and demonstrates a "Customer First" principle by providing customers with maximum value to increase their satisfaction. By adhering to the mission of producing document management devices that take balance between "Economy" and "Ecology", KYOCERA Document Solutions succeeds to develop document management devices with advanced technologies which help customers to optimize office productivity and efficiency at a low total cost of ownership and, at the same time, improving environmental performance.

Advantages



High productivity and usability.

- Convenient Multi-Purpose Tray First Mode: Allow printing via Multi-Purpose Tray whenever paper is loaded there.
- Direct print from USB memory.
- 2-sided print as standard.
- Support Job retention with RAM disk/SD card.



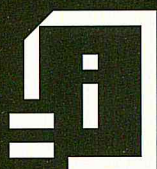
High Security.

- Sophisticated network security (IPsec, HTTPS, LDAP over SSL, SNMPv3) as standard and prevent improper access.
- Private Print enables secure print jobs with preset password request at the device.



Eco-friendly advantages.

- Low energy consumption
- Power consumption is low by using the new low temperature melting toner.
- Reduce wastage with Long Life Consumables and Drums.
- Reduce noise by built-in Quiet Mode*.



Streamlining Daily Business Process.

By combining the innovative Business Application, this printer can manage document in an effective approach.



- KYOCERA MyPanel
Remote control designated KYOCERA printing devices by smartphone or tablet.



- KYOCERA Net Manager**
Control sensitive documents and reduce printing costs.



- KYOCERA Mobile Print
Conveniently print files, web pages and images using smartphone or tablet.



- Mopria Print Service
Simple and seamless way to connect and send documents and pictures from Android devices to a nearby printer.



- AirPrint
Print Documents, photographs, images, etc. directly from iOS devices/Mac.

*Print speed will be reduced
**Optional



Efficient and Reliable Operation

These economical models are the perfect solutions for small offices that set high standard. They include various functions that drives for professional results. Delivering at an astounding speed, these printers know how to impress.



Fast A4 Print
Up to 60 ppm*

High capacity toner
Newly added 40k yield toner

Eco-Consious
No need to change drum
(For max. 500,000 sheets print)

PF-3110
500 sheets feeding cassettes
Up to 4 cassettes

Caster Kit
To comply with new product safety standard
(IEC62368-1**), enhanced physical stability.

Operation Panel
Clear 5 line LCD display with
numeric key

PF-3100 Paper Feeder (Optional)
2,000 sheets

PB-325 Attachment Kit (Optional)
For PF-3100

“eKUIO x1”
Network/USB
USB Host x2

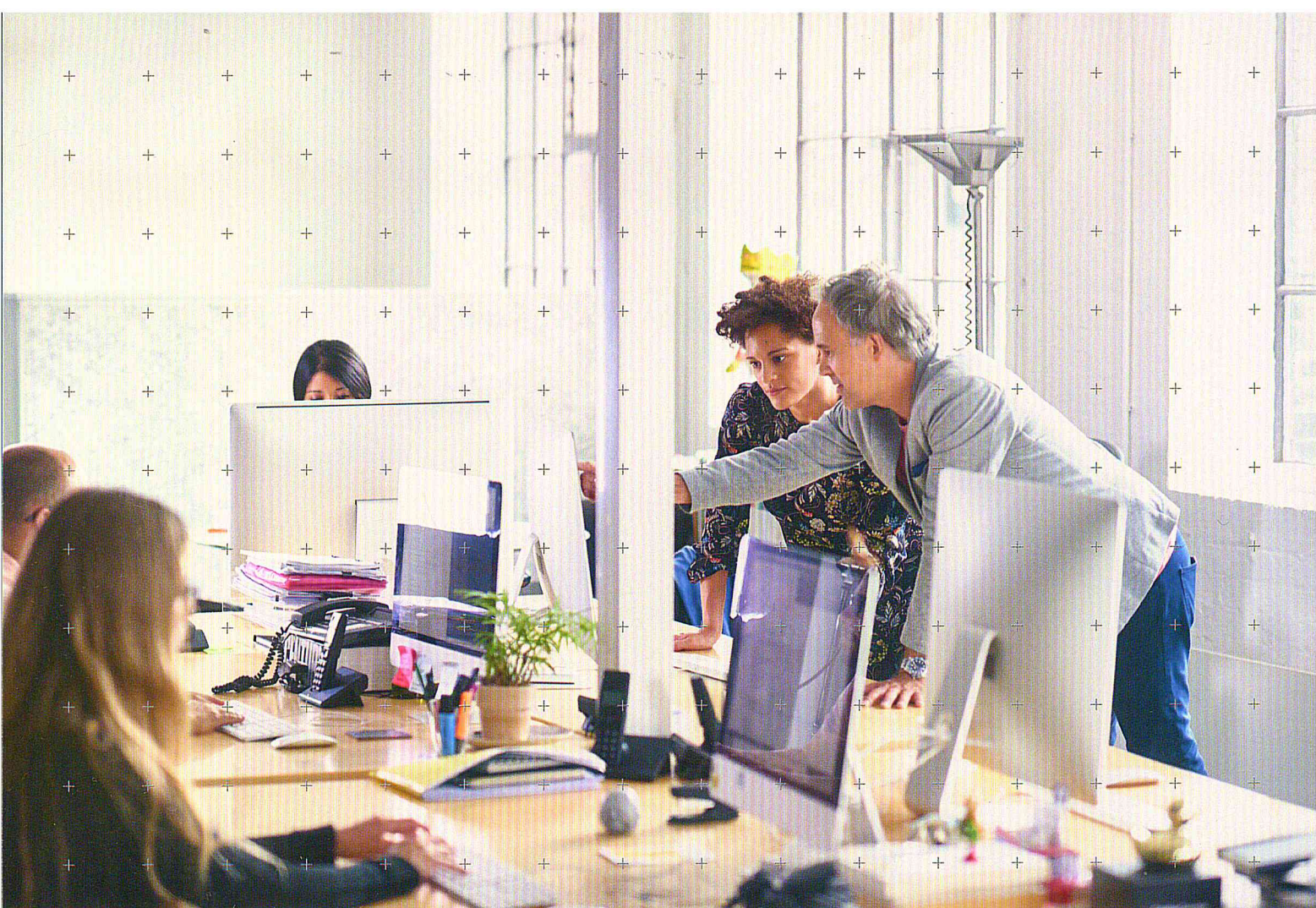
60 ppm

*ECOSYS P3260dn

**New product safety standard IEC62368-1 is expected to be effective.

It will require more strict machine physical stability.

Monochrome Printer



Improve product appeal

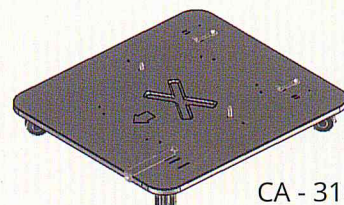
Enhanced Data Security

For optional storage (HD-6/7), Functions such as overwrite deletion and data encryption (Data Security Kit (E)) which used to be offered as options can be used only by activating the function (default: OFF but free activation without license key)

Caster Kit

■ Set Caster Kit to improve product appeal due to the following 2 reasons.

- ① Caster-stand to put the machine when install it on the floor.
- ② To comply with new product safety standard (IEC62368-1*), enhanced physical stability.



CA - 3100

*New product safety standard IEC62368-1 is expected to be effective.
It will require more strict machine physical stability.

Main Specifications

Model		ECOSYS P3145dn	ECOSYS P3150dn	ECOSYS P3155dn*	ECOSYS P3260dn
Type	Desktop				
Writing Method	Laser exposure dry election				
Print Speed (A4) (Mono)	45 ppm		50 ppm	55 ppm	60 ppm
First Print Out Time	5.3 seconds or less		5.4 seconds or less	4.5 seconds or less	
Warm Up Time	16 seconds or less		20 seconds or less	25 seconds or less	
Resolution	600dpi x 600 dpi, Fast 1200, Fine 1200				
Control Panel	LCD 21 characters x 5 lines with white LED back light				
Power Consumption (Standard configuration)	Print Mode	594W	636W	675W	721W
	Stand-by Mode	10W	11W		
	Sleep Mode	0.5W			
Noise (ISO7779/ ISO9296)	Print Mode	54dB(A); Silent mode: 50dB(A)	55dB(A); Silent mode: 50dB(A)	56dB(A); Silent mode: 51dB(A)	57dB(A); Silent mode: 52dB(A)
	Stand-by Mode	30dB(A)			33dB(A)
Dimension (W x D x H) (Main Unit)	390 x 416 x 308mm		390 x 416 x 343mm		410 x 410 x 363mm
Weight (Main Unit / Excluding Toner)	Approx. 14.1 kg		Approx. 15.5 kg		
Controller					
CPU	Cortex-A9 1.2 GHz				
Memory	Standard 512MB (Max. 2.5GB)				
Data Security	Data Security Kit (E) (Available when HD-6/7 is installed)				
Interface	USB 2.0 High Speed x1; Ethernet 10BASE-T/100BASE-TX/1000BASE-T (TCP/IP, NetBEUI); USB Host x2; e-KUIO x1; Wireless LAN (optional)				
PDL	PCL6 (PCL5e, PCL-XL), KPDL3 (Postscript 3 compatible), PRESCRIBE, IBM Proprinter, Epson LQ-850, PDF Direct Print Ver. 1.7, XPS, Open XPS				
Network Printing	TCP/IP, FTP, LPR, Port9100, IPP, IPP over SSL, NetBEUI, WSD Print, Apple Bonjour, IPsec, SNMPv3, IEEE802.1x, IPP over SSL/TLS, HTTP over SSL/TLS, FTP over SSL/TLS, SMTP over SSL/TLS, POP3 over SSL/TLS, Enhanced WSD over SSL/TLS				
Operating System	Windows Server 2003, Windows Server 2008, Windows Server 2008 R2, Windows Server 2012, Windows Server 2012 R2, Windows Vista, Windows 7, Windows 8, Windows 8.1, Windows 10; Apple Macintosh OS X 10.5 or later; Linux				
USB Memory Printing	Standard				
USB Memory Printing Format	TIFF, JPEG, PDF, XPS, Open XPS				
Mobile Printing	AirPrint, Mopria, KYOCERA mobile print				
Paper Handling					
Paper Capacity	Standard	500 sheets x1 (Cassette) + 100 sheets (MPT)			
	Maximum	2,600 sheets (Main Unit + PF-3110 x4 + MPT)			
Paper Size	Cassette	Max. A4 (Legal) - Min. A6R, banner paper: up to 915mm			
	Option	Max. A4 (Legal) - Min. A5R			
Address Storage	MPT	Max. 216mm x 356mm - Min. 70mm x 140mm			
	Cassette	60 - 120 g/m ²			
	Option	60 - 120 g/m ²			
	MPT	60 - 220 g/m ²			
	Duplex Printing	Paper size: A4/Legal - A5R; Paper weight: 60 - 120 g/m ²			
Output Capacity	250 sheets face-down		250 sheets face-up, 500 sheets face-down		
Consumables & Options					
Toner Kit (Page Yield in accordance with ISO/IEC 19752)	TK-3165 (12,500 pages)		TK-3175 (15,500 pages)	TK-3195 (25,000 pages)	TK-3195 (25,000 pages) TK-3205 (40,000 pages)
Capacity of Start Up Toner	6,000 pages		8,000 pages	10,000 pages	11,000 pages
Maintenance Kit	MK-3265 (300,000 pages)		MK-3305 (500,000 pages)		
Paper Feeder	PF-3110: 500 sheets (Max. x4); PF-3100: 2,000 sheets; PB-325: Attachment Kit for PF-3100				
Face-up Output Tray	PT-320: 250 sheets Face-up**				
Card Authentication	Card Authentication Kit(B)				
Gigabit Ethernet Board	IB-50: For additional Network				
Wireless LAN Interface	IB-36/IB-51: 802.11 b/g/n/Wireless LAN/WiFi Direct***				
Parallel Interface	IB-32B: IEEE 1284 Interface				
Storage Device	HD-6: SSD 32GB; HD-7: SSD 128GB				
Caster Kit	CA-3100				

*ECOSYS P3155dn is available in Taiwan only

**Except ECOSYS P3145dn

***WiFi Direct is for IB-36 only

บริษัท เคียวเซรา ด็อกคิวเมนต์ โซลูชันส์ (ประเทศไทย) จำกัด
โทร. 0-2586-0333 โทรสาร 0-2586-0278
www.kyoceradocumentsolutions.co.th



Kyocera Document Solutions does not warrant that any specifications mentioned will be error-free. Specifications are subject to change without notice. Information is correct at time of going to press.
All other brand and product names may be registered trademarks or trademarks of their respective holders and are hereby acknowledged.

©2019 KYOCERA Document Solutions Asia Limited.

Your Kyocera Business Partner

www.kyoceradocumentsolutions.co.th